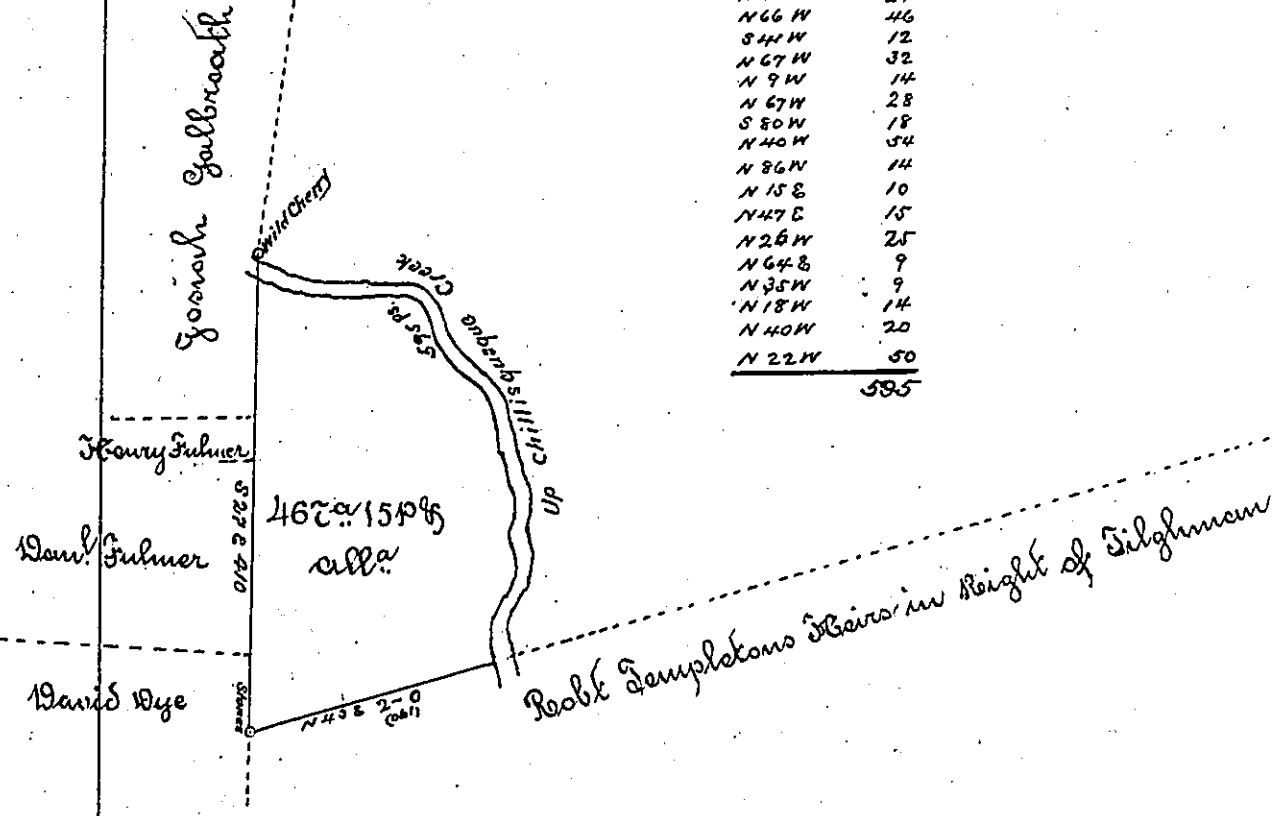


John Allen
Originally 6468.00

Up the Creek.

N 76 W	26
S 48 W	40 1/2
S 65 W	32 1/4
S 17 W	36
S 58 W	16
N 23 W	30
N 76 W	10
N 50 W	24
N 66 W	46
S 44 W	12
N 67 W	32
N 9 W	14
N 67 W	28
S 80 W	18
N 40 W	54
N 86 N	14
N 15 E	10
N 47 E	15
N 26 W	25
N 64 E	9
N 55 W	9
N 18 W	14
N 40 W	20
N 22 W	50
<hr/>	
	585



The draft of a tract of land situate in Perry Township in the County of Columbia (late North) being a part of a large tract originally surveyed for John Allen Esquire on his Application to D, dated the 4th February 1769 containing four Hundred and sixty seven and fifteen Perches & the usual allowance, Resurveyed October 15th 1818 by the old lines.

Jacob Spangler Esquire
Surveyor General

Thos Woodside D.S

IN TESTIMONY that the above is a copy of the original remaining on file in the Department of Internal Affairs of Pennsylvania, made conformably to an Act of Assembly approved the 16th day of February, 1833, I have hereunto set my Hand and caused the Seal of said Department to be affixed at Harrisburg, this

Twenty-sixth day of July 1894

W. H. Steward
Secretary of Internal Affairs